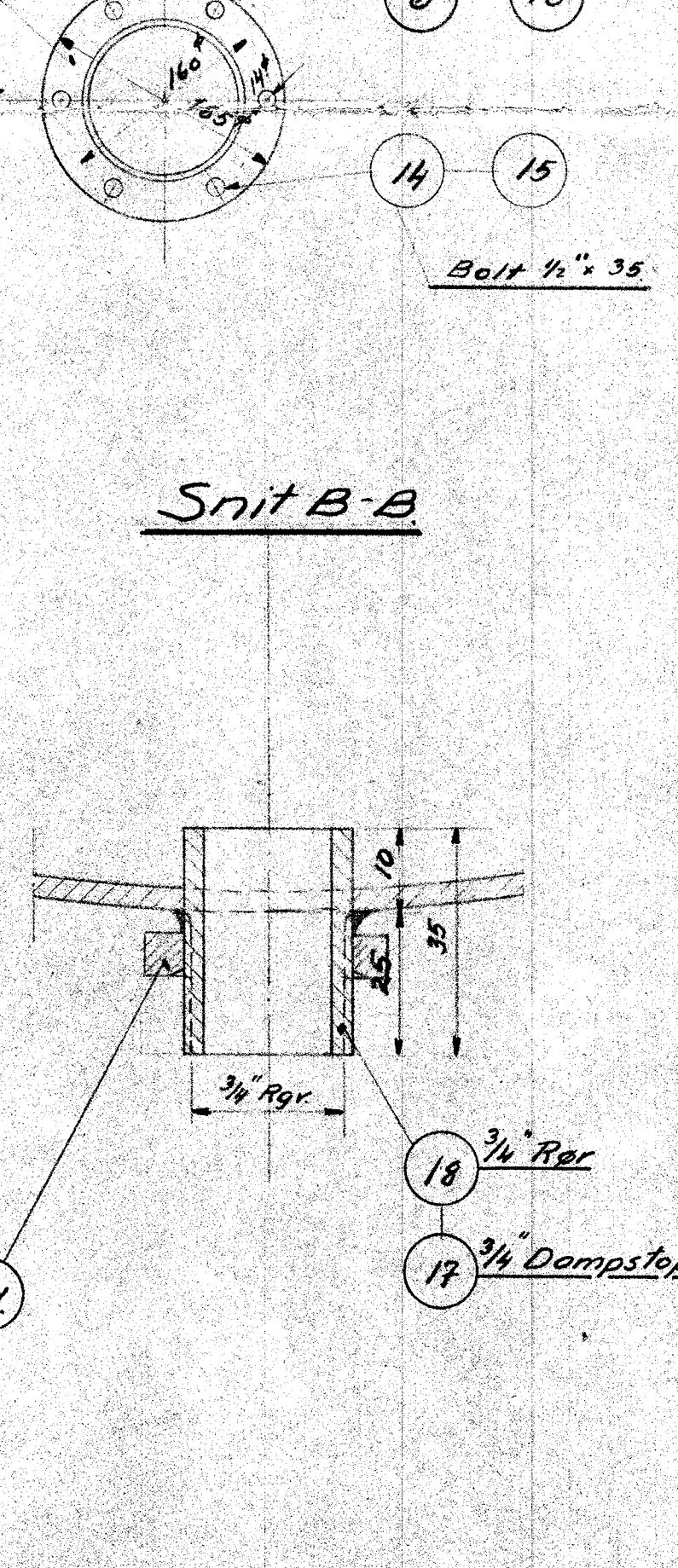
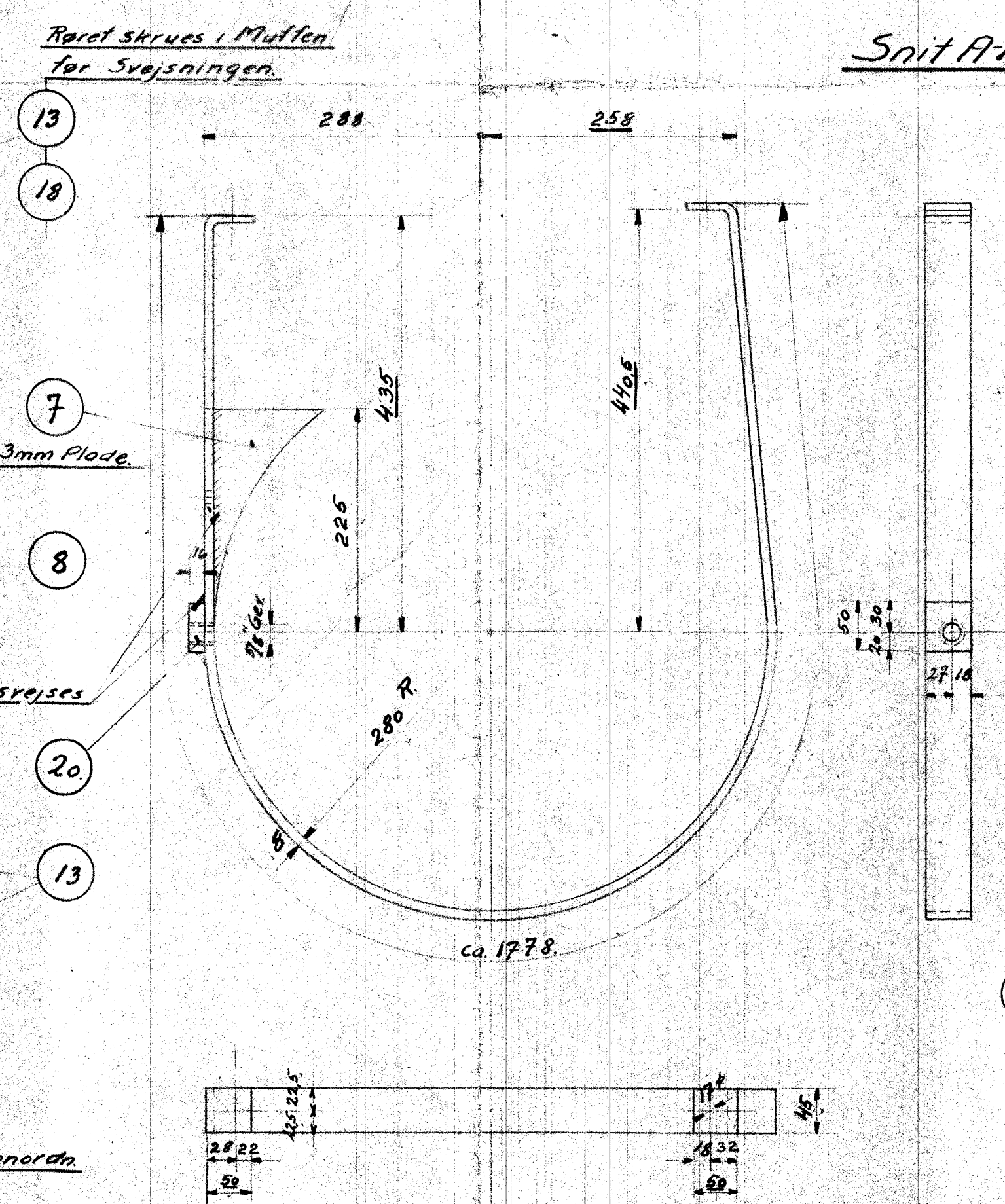
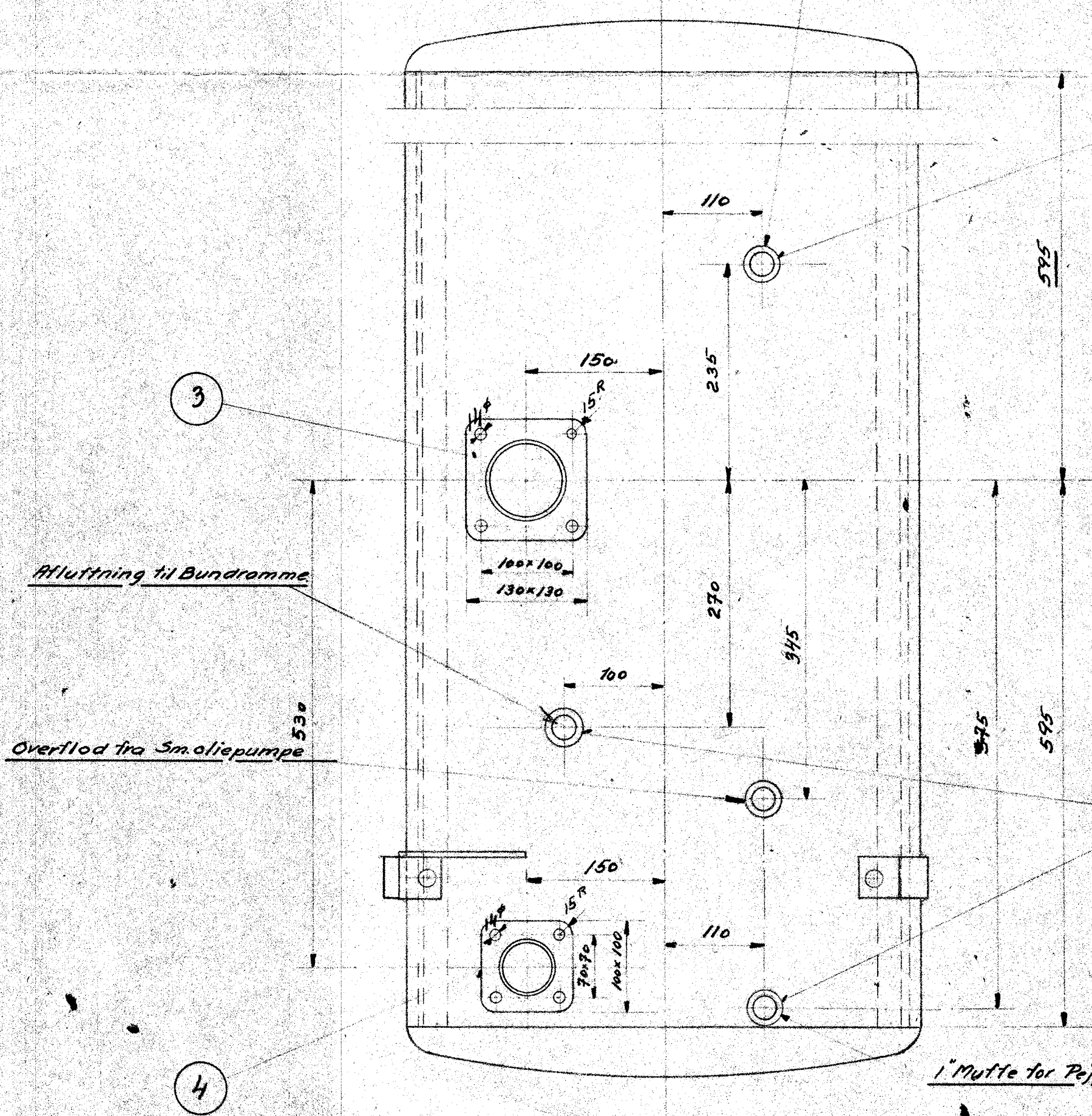
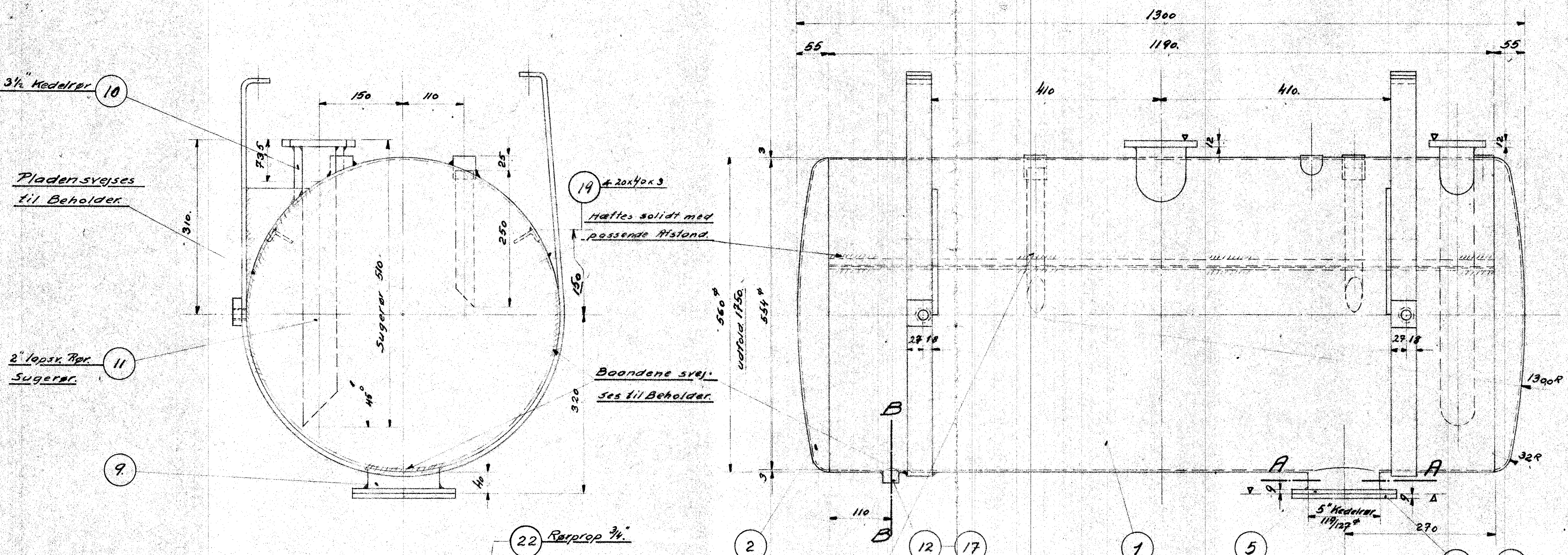


STYKLISTE NO. 55153.

| STYK NR. | STYK | BETEGN. SE. | MÅL | MATERIAL | REMARK |
|----------|------|--------------------------------|----------|----------|--------------------------|
| 1 | 1 | Svøb. 175x119x3. | Beholder | plade | 131K. 2250x1830 x3 |
| 2 | 2 | Endebund 560x3. | --- | --- | 131K. 760x1830 x3 |
| 3 | 1 | Flange 130x130x12. | Jern- | plade | 196x185x12,5 |
| 4 | 1 | do. 100x100x5 | --- | --- | 108x106x12,5 |
| 5 | 1 | do. 185x9 | --- | --- | 190 x190x9,5 |
| 6 | 1 | Dæksel 185x9 | --- | --- | 190 x190x9,5 |
| 7 | 2 | Afstivningsplade 3mm | --- | --- | Rest |
| 8 | 2 | Board | Fluss | Jern | #45x8 x3700 |
| 9 | 1 | Slamsamler | Kedel | rør | 5x50 |
| 10 | 1 | Tilløbsstuds | --- | --- | 3 1/2 x120 |
| 11 | 1 | Sugestuds | Japox | Rør | 2 x515 |
| 12 | 1 | Aftapningsstuds | --- | --- | 3/4 x40. |
| 13 | 4 | Stuase i Muffe. | Jern. | --- | Magasin |
| 14 | 6 | Bolt. m. Møt. 1/2 x 35 | Fluss | Jern | --- |
| 15 | 6 | Fjederskriver 1/2 | Staal | --- | --- |
| 16 | 1 | Pakning 185x1 | Kring | rit | 190x190x1 |
| 17 | 1 | Dampstøpene. | Metal | --- | købes. |
| 18 | 2 | Rør 1" | Japox | Rør | 1" x515 |
| 19 | 2 | Vinkeljern. + 20x40x3 | Fluss | Jern | #20x40x3 x2390. |
| 20 | 2 | Knast #46x16x50 | --- | --- | #46x16x50 |
| 21 | 1 | Kontramøt. neddr 3/4 Rgr. 6.F. | NØ | --- | Magas. |
| 22 | 1 | Rørprop. 1" Rgr. | --- | --- | NØ 291 |



A/S FRICH'S AARHUS
Smøreliebeholder. 3052.
 Diesel-el. 410HK. Motorloko.
 N.D. 1:5
 DATED 19-10-33 1:1 1282. 16-80